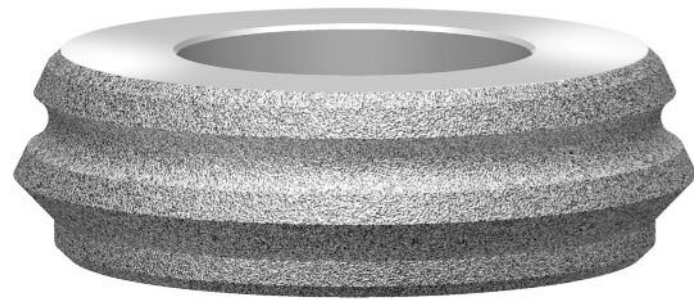
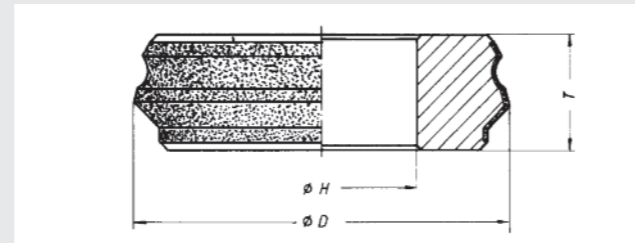


# Abrichtrollen *Roller truers*



TYPE 49 - Abrichtrollen / *Roller truers*



# diamant/cbn industrie

**Profilscheiben**  
*Profile wheels*

**TYPE 43**

**Centerless-Schleifscheiben,  
mehrlagig**  
*Centerless-grinding wheels,  
multilayer*

**TYPE 47**

**Abrichtrollen**  
*Roller truers*

**TYPE 49**

**Zahnflankenschleifscheiben**  
*Gear grinding wheels*

**TYPE 44**

**Zahnradbeschichtungen**  
*Plating of gears*

**TYPE 45**

**Certified quality:**  
DIN EN ISO 9001:2008

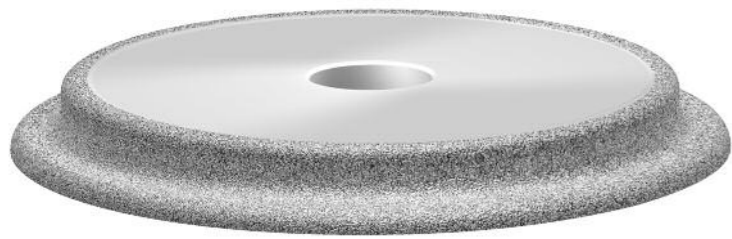
Finzler, Schrock & Kimmel GmbH  
Arzbacher Straße 55-57  
D-56130 Bad Ems  
Tel.: +49 (0) 26 03 / 9 60 30  
Fax: +49 (0) 26 03 / 9 60 3-70  
e-Mail: [industrie@fis-online.com](mailto:industrie@fis-online.com)  
Internet: [www.fis-online.com](http://www.fis-online.com)

03/2016

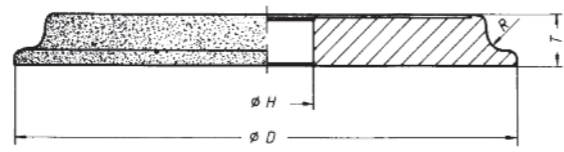


# Schleifscheiben *Grinding wheels*

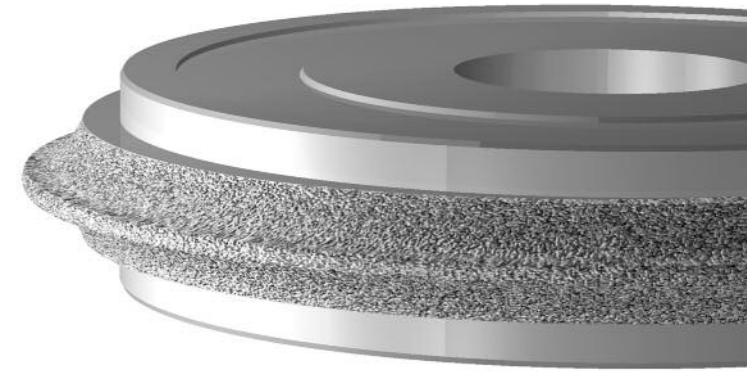
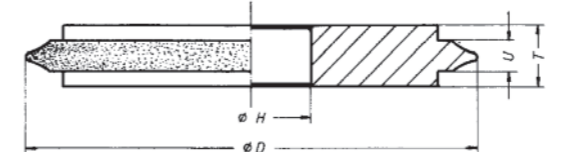
# Verzahnungswerkzeuge *Grinding and honing tools*



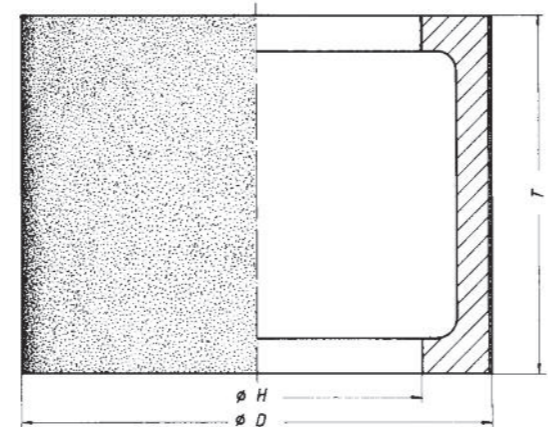
TYPE 43 - Profilscheiben /  
*Profile wheels*



TYPE 44 - Zahnflankenschleifscheiben /  
*Gear grinding wheels*



TYPE 47 - Centerless-Schleifscheiben,  
mehrlagig  
*Centerless-grinding wheels,  
multilayer*



TYPE 45 - Zahnradbeschichtungen /  
*Plating of gears*

