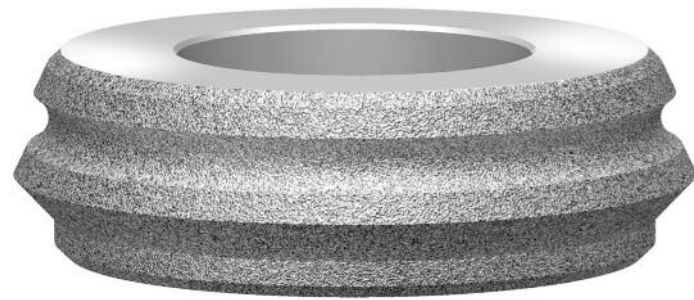
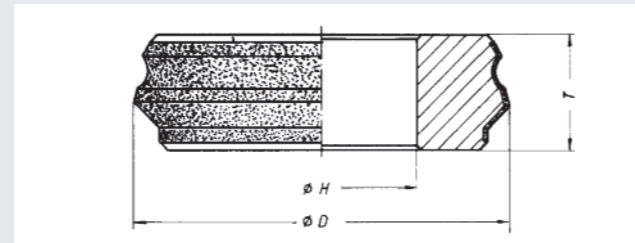


Abrichtrollen *Roller truers*



TYPE 49 - Abrichtrollen / *Roller truers*



diamant/cbn industrie

Profilscheiben <i>Profile wheels</i>	TYPE 43
Centerless-Schleifscheiben, mehrlagig <i>Centerless-grinding wheels, multilayer</i>	TYPE 47
Abrichtrollen <i>Roller truers</i>	TYPE 49
Zahnflankenschleifscheiben <i>Gear grinding wheels</i>	TYPE 44
Zahnradbeschichtungen <i>Plating of gears</i>	TYPE 45

Certified quality:
DIN EN ISO 9001:2015

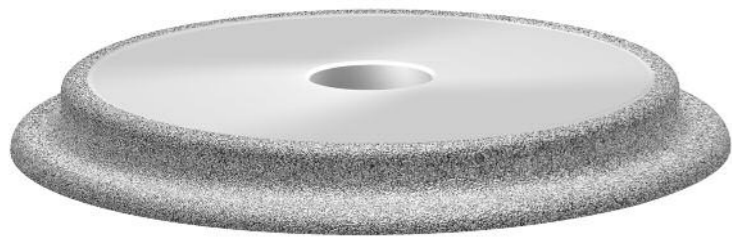
04/2026

Finzler, Schrock & Kimmel GmbH
Arzbacher Straße 55-57
D-56130 Bad Ems
Tel.: +49 (0) 26 03 / 9 60 30
Fax: +49 (0) 26 03 / 9 60 3-70
e-Mail: industrie@fis-online.com
Internet: www.fis-online.com

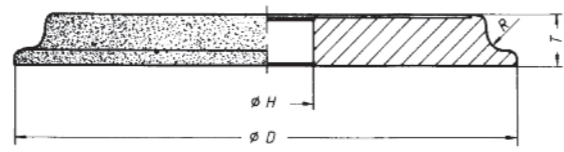


Schleifscheiben *Grinding wheels*

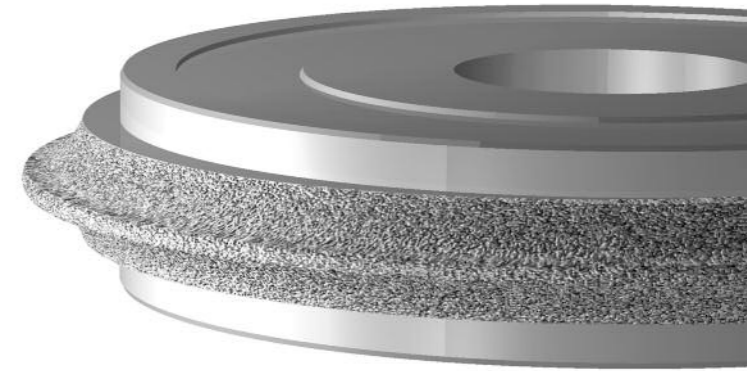
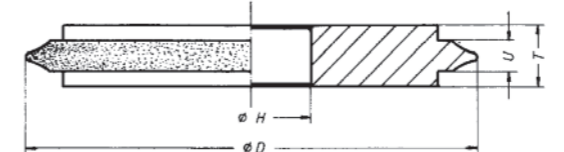
Verzahnungswerkzeuge *Grinding and honing tools*



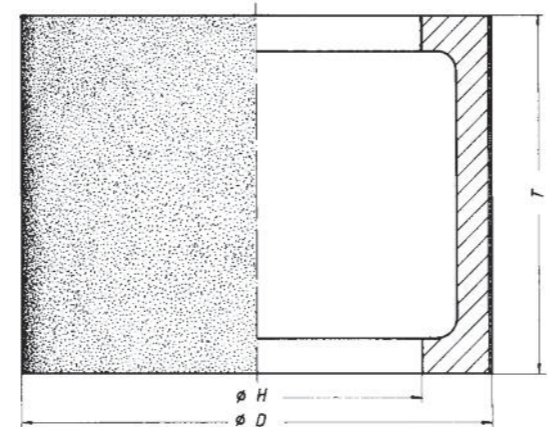
TYPE 43 - Profilscheiben /
Profile wheels



TYPE 44 - Zahnflankenschleifscheiben /
Gear grinding wheels



TYPE 47 - Centerless-Schleifscheiben,
mehrlagig
*Centerless-grinding wheels,
multilayer*



TYPE 45 - Zahnradbeschichtungen /
Plating of gears

